

# Reopening and the Path to Recovery

11/20/20 Update

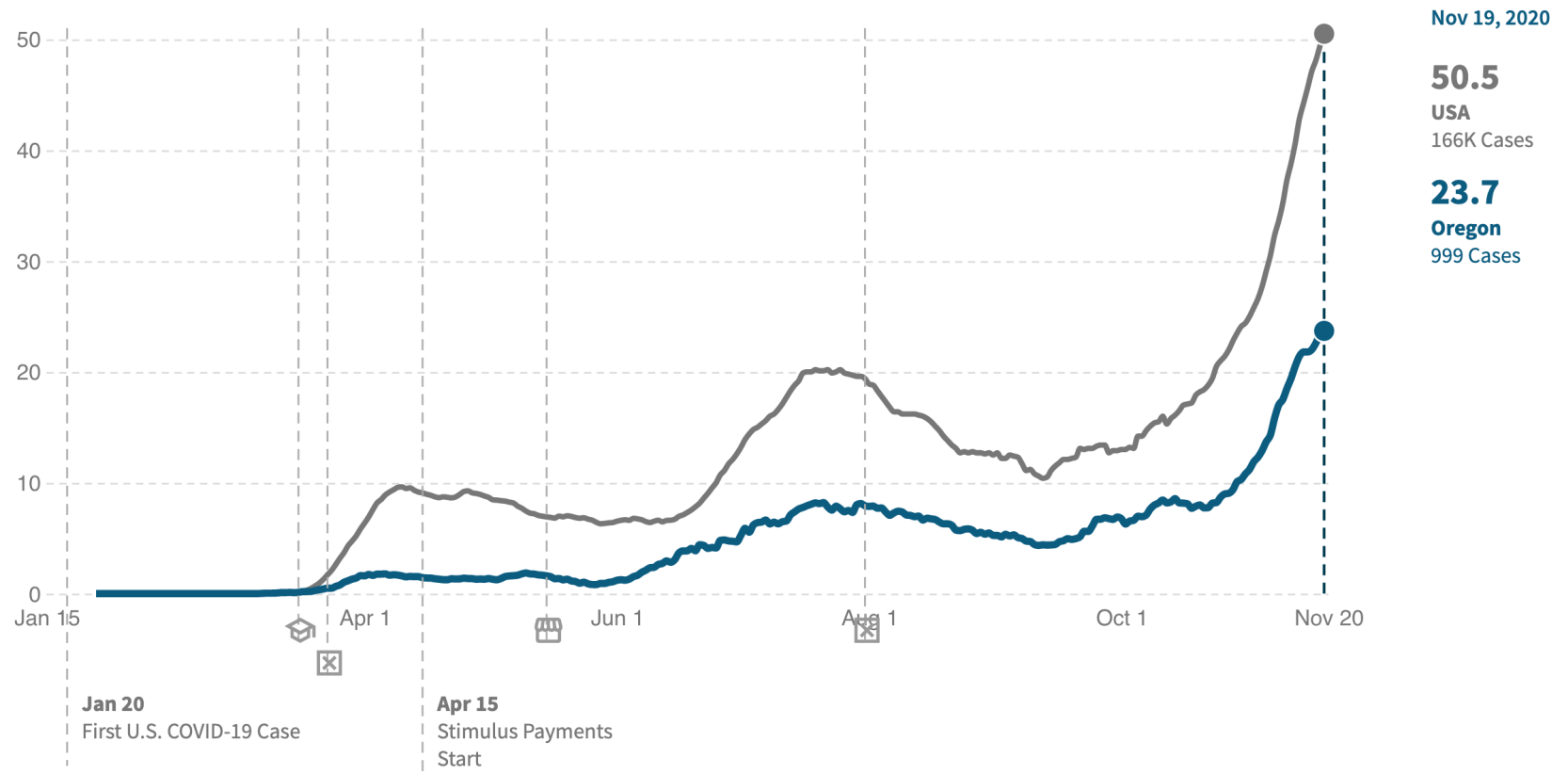
**ECONorthwest**

ECONOMICS • FINANCE • PLANNING

# COVID-19 Cases Climbing Going Into Autumn

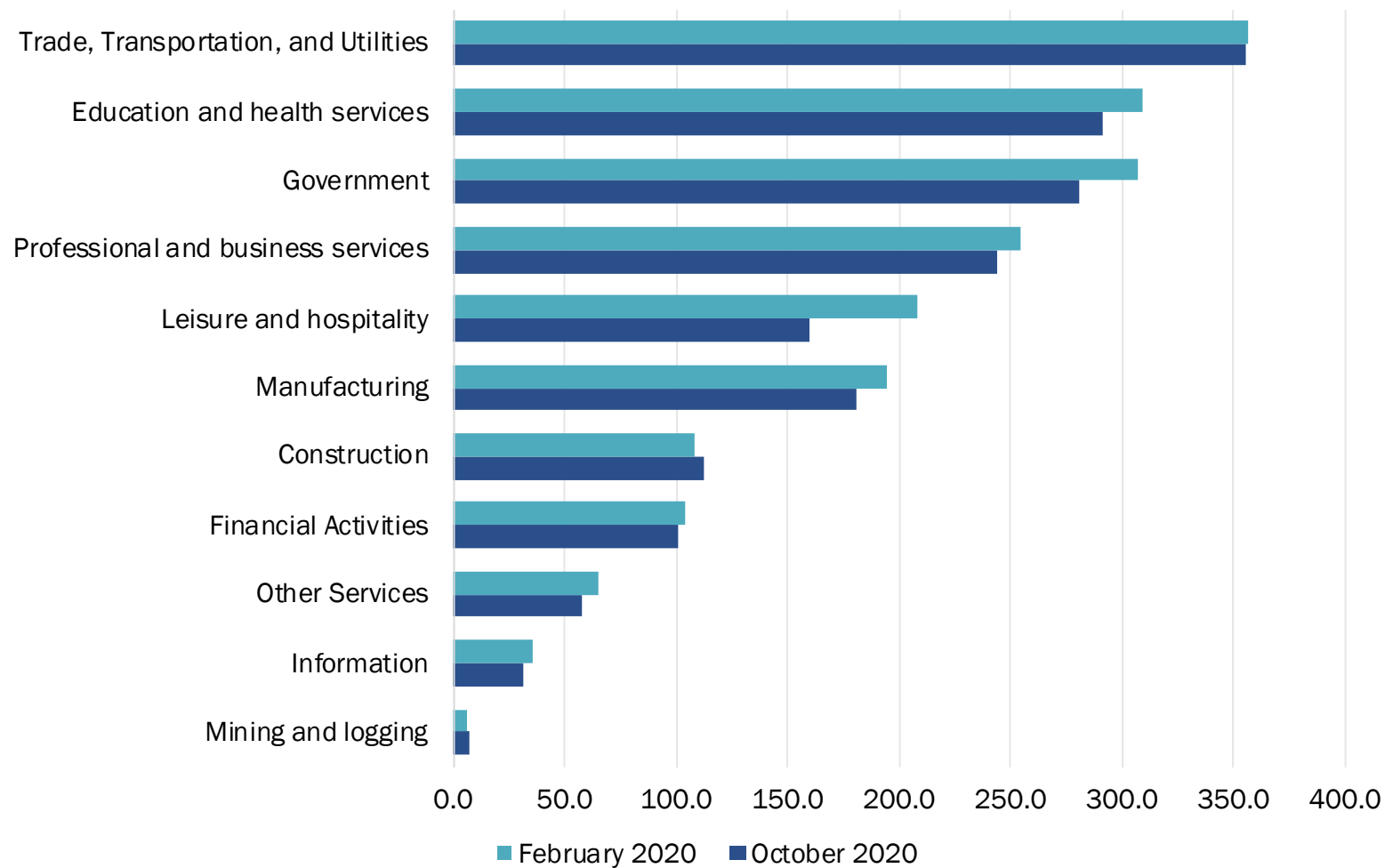
## Daily Reported COVID-19 Cases per 100,000 People

In **Oregon**, on **November 19 2020**, there were **23.7** newly reported COVID-19 cases per 100,000 people.



# Employment recovering from historic lows

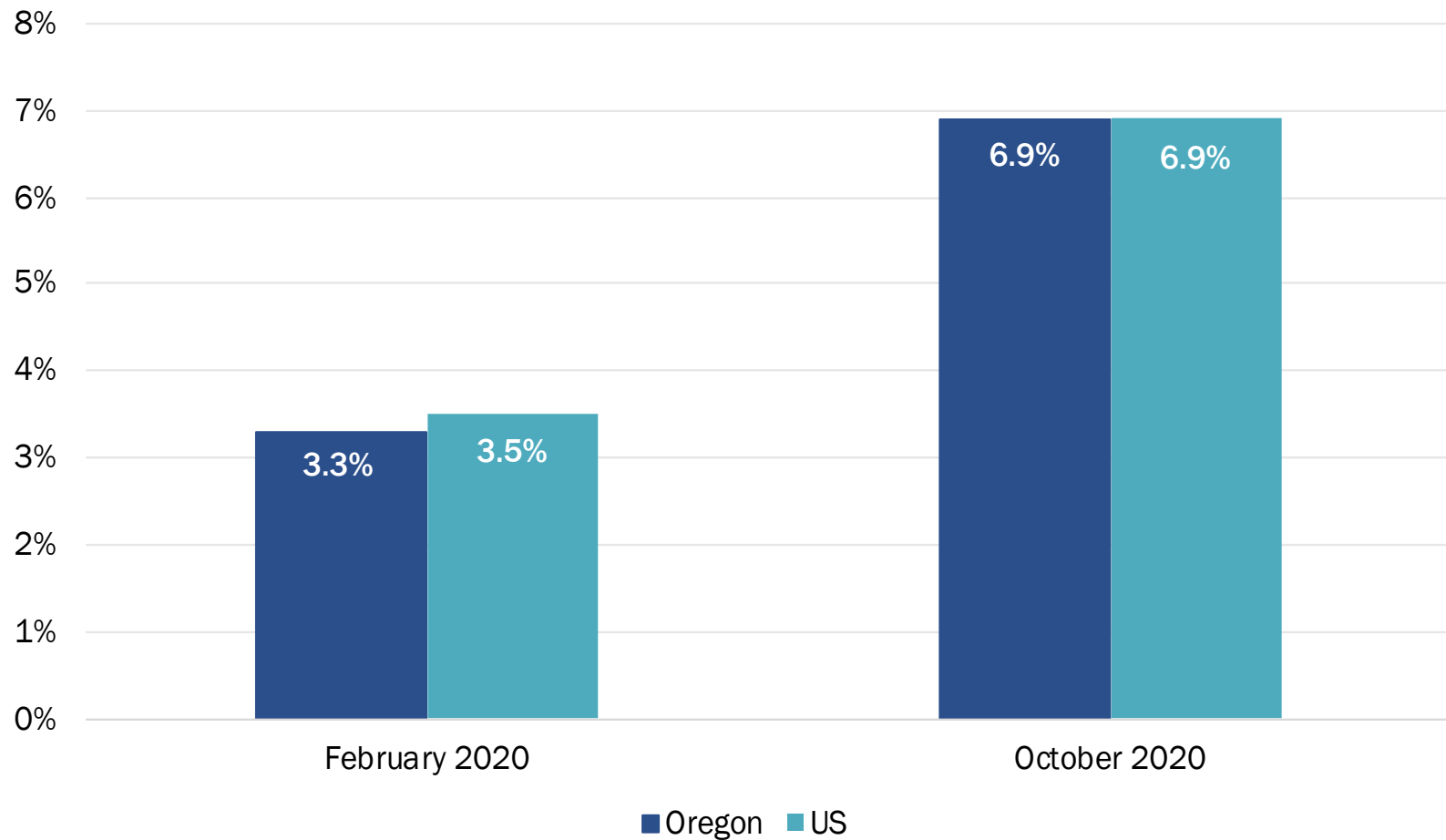
Total Number of Employees by Supersector, February and October 2020



Source: QualityInfo

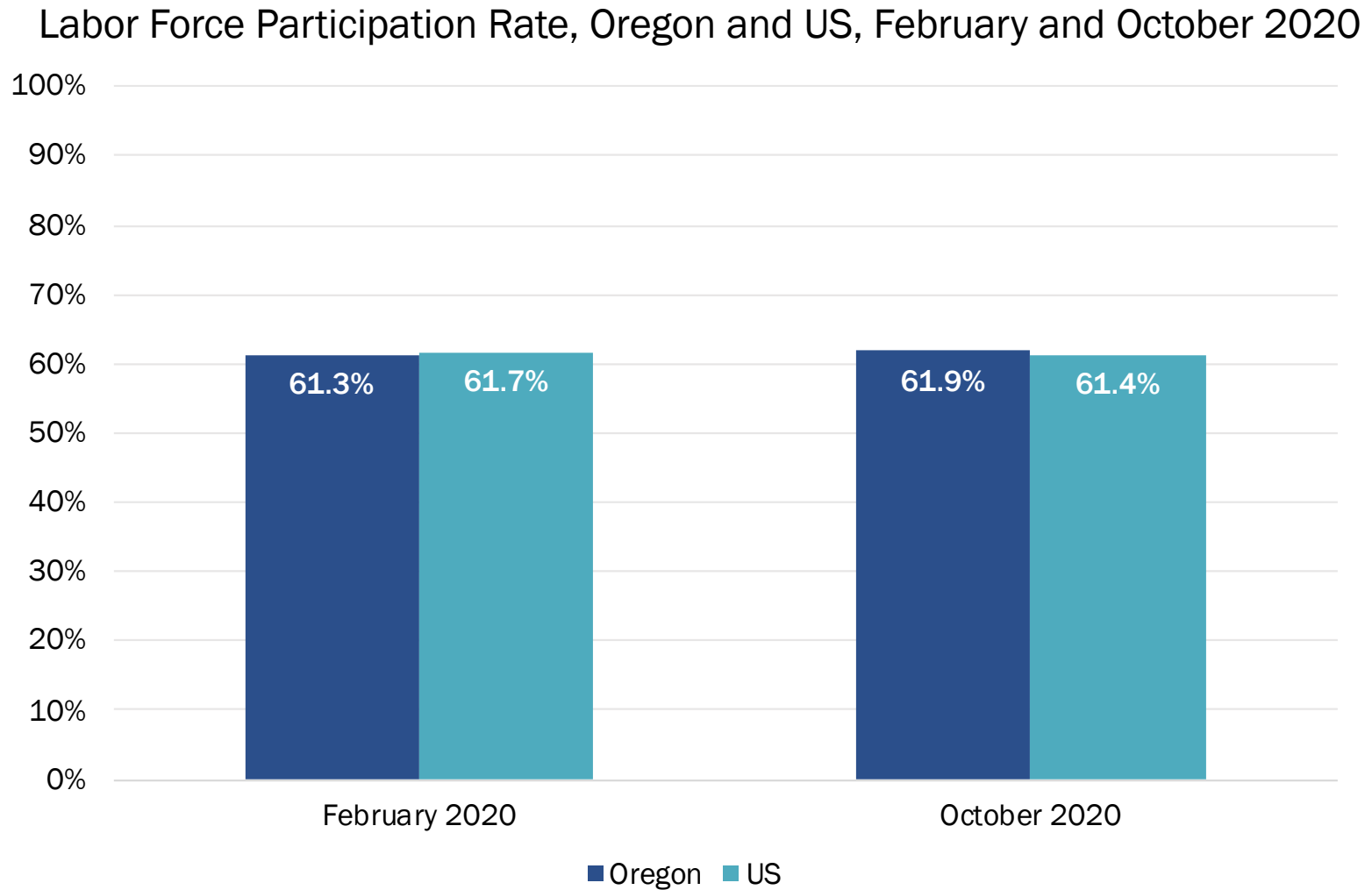
# Oregon's UI Rate On Par with US

Unemployment Rate, Oregon and US, February and September 2020



Source: Bureau of Labor Statistics

# LFP in Oregon increased in October\*

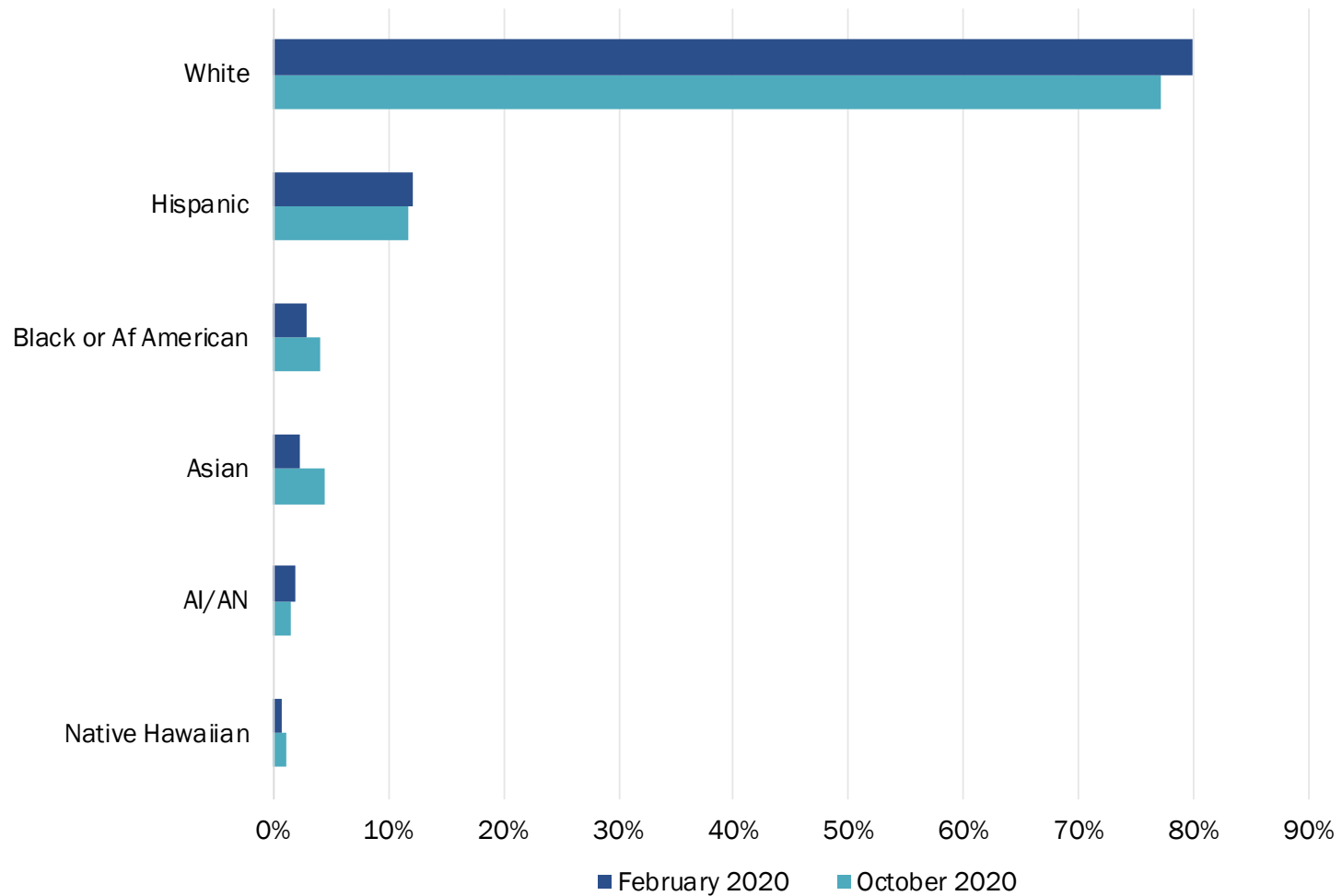


Source: Bureau of Labor Statistics

\* These results are preliminary and may be revised downward

# Share of continuing claims by race/ethnicity

Oregon's Share of Continuing Unemployment Insurance (UI) Claims by Race and Ethnicity, February and October 2020



Source: Quality Info.

# Consumer Spending

## Percent change in consumer spending compared to January 2020

In **Oregon**, as of **November 08 2020**, total spending by all consumers **decreased** by **5.3%** compared to January 2020.

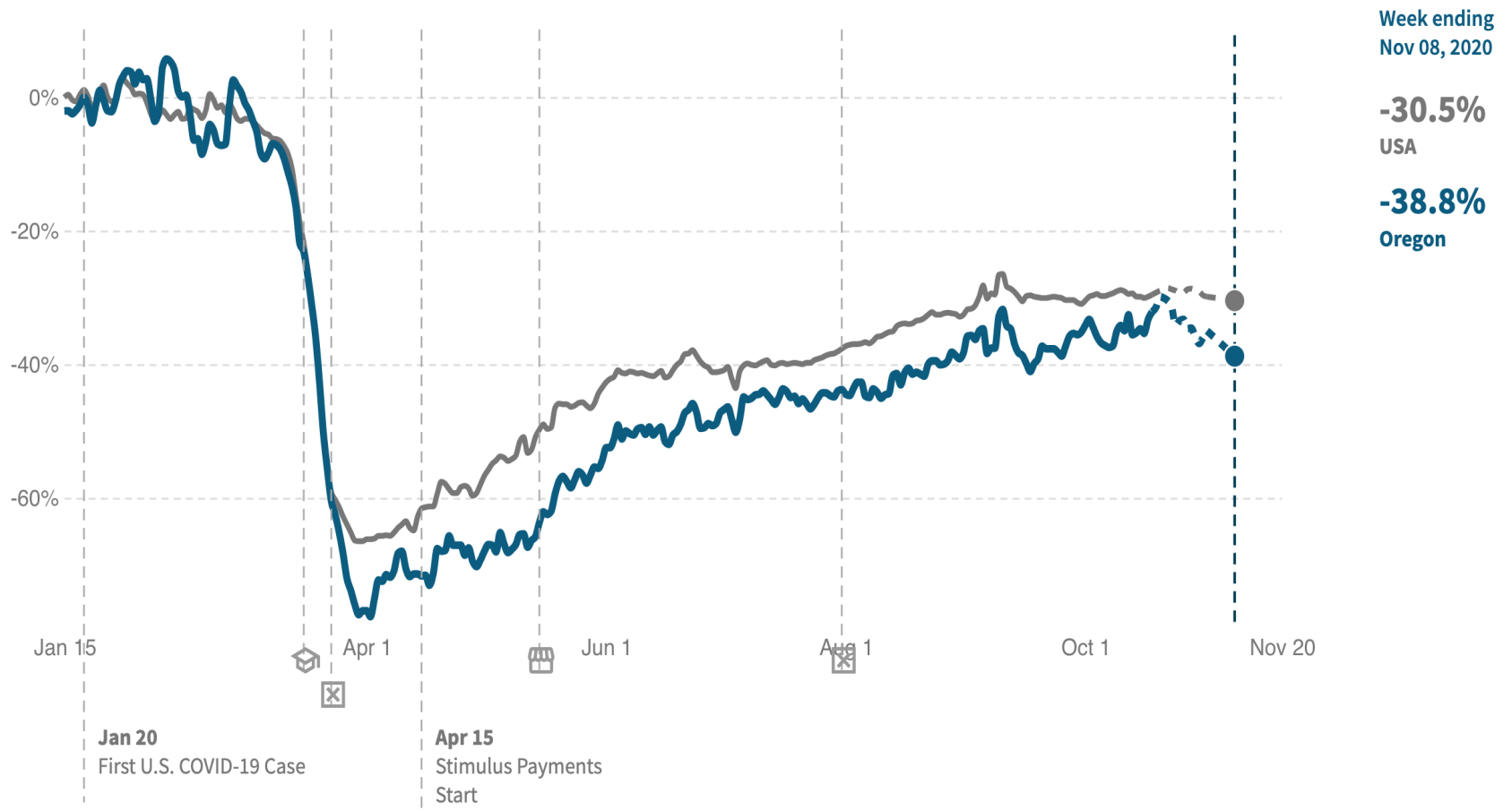


Source: Opportunity Insights

# Restaurant/Hotel Spending

## Restaurant/Hotel Spending by All consumers Relative to January 2020

In **Oregon**, as of **November 08 2020**, restaurant and hotel spending by all consumers **decreased** by **38.8%** compared to January 2020.



Source: Opportunity Insights



# ECONorthwest

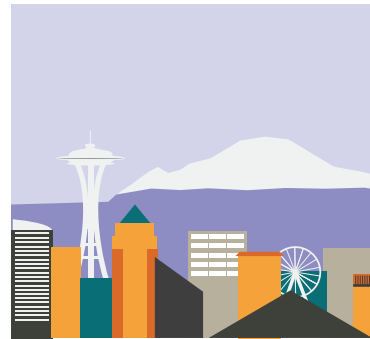
ECONOMICS • FINANCE • PLANNING



Eugene



Portland



Seattle



Boise